

APPLICATION NOTE

MD8480B

W-CDMA Signalling Tester

-Reference Material for JATE Test-

ANRITSU CORPORATION

Copyright © 2005 by ANRITSU CORPORATION

The contents of this manual shall not be disclosed in any way or reproduced in any media without the express written permission of Anritsu Corporation.

MD8480B

W-CDMA Signalling Tester

Application Note

-Reference Material for JATE Test-

Product Marketing Dept.
Wireless Measurement Div.
ANRITSU CORPORATION

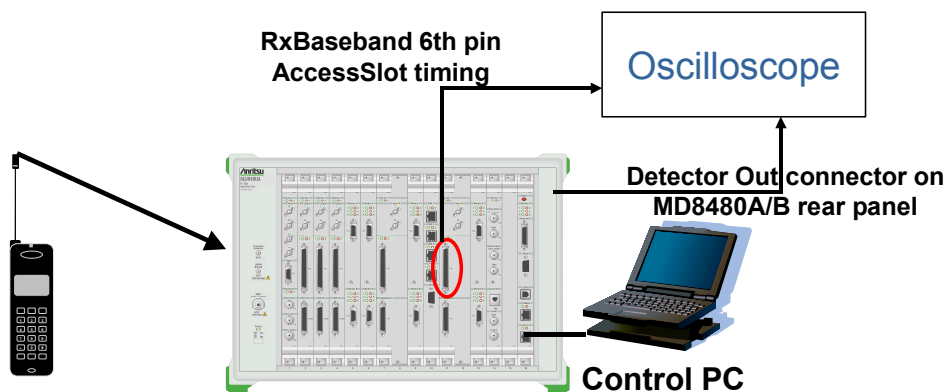
Discover What's Possible™
MD8480B-E-F-1

Slide 1

Anritsu

19th section (1)

- In the setup below, The UE control channel signal is inputted to the oscilloscope from the 'Detector Out' connector on the MD8480A/B rear panel. The Access Slot timing is inputted to the oscilloscope from the MD8480A/B. Then, both timings are compared. For Access Slot timing, please refer to the instruction manual Appendix I.



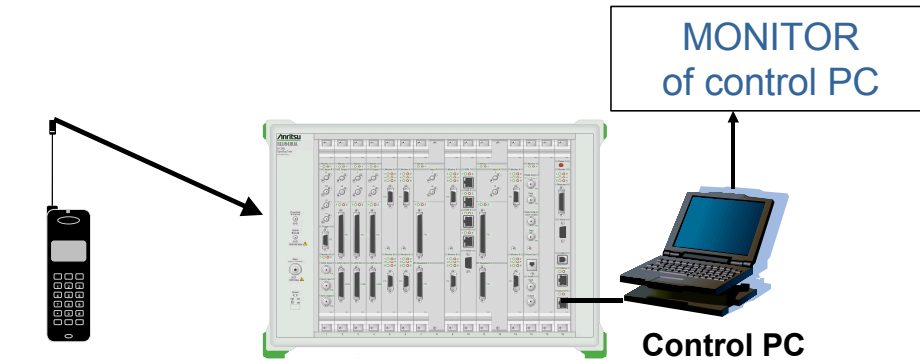
Discover What's Possible™
MD8480B-E-F-1

Slide 2

Anritsu

19th section (2)

- In the setup below, transmission timing errors of the UE communication channel are confirmed by the MONITOR of the MD8480A/B control PC.

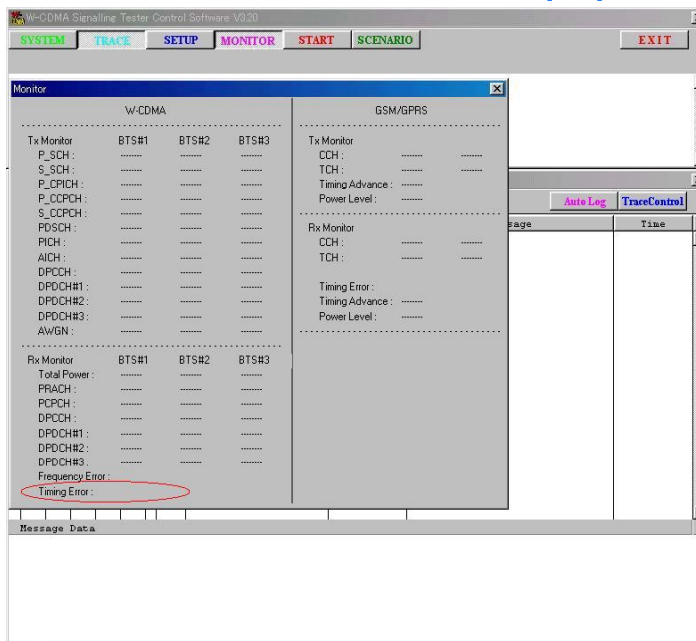


Discover What's Possible™
MD8480B-E-F-1

Slide 3

Anritsu

19th section (2)



- Transmission timing is indicated by the red circled area in the left figure.
- Measurement error is ± 0.6 Chip.
- For timing zero point correction, please refer to Appendix J.1.2 and J.1.3 of the instruction manual.

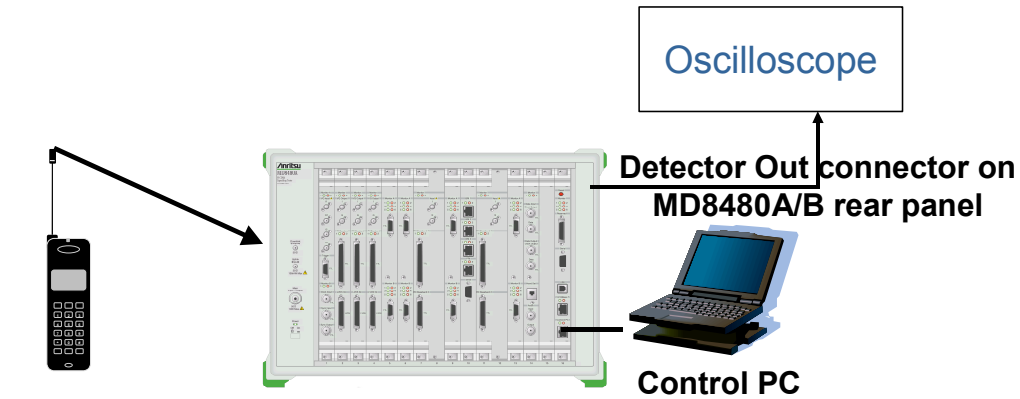
Discover What's Possible™
MD8480B-E-F-1

Slide 4

Anritsu

20th section (1)

- In the setup below, the UE control channel signal is inputted to the oscilloscope from the 'Detector Out' connector on the MD8480A/B rear panel and is measured. (The UE RF signal can be measured by a spectrum analyzer as well.) The difference between the Preamble and the Message Part can be changed to 7680 Chips or 12800 Chips by scenario.



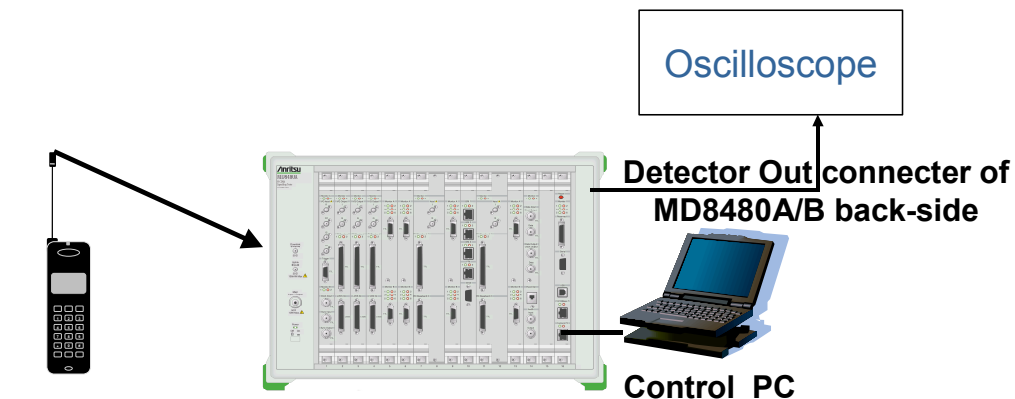
Discover What's Possible™
MD8480B-E-F-1

Slide 5

Anritsu

20th section (2)

- Test can be performed using the same setup as 20th section (1) as in the figure below. The difference is that the “#define AICH_ACK_NACK” parameter is set to AICH_NACK by scenario.



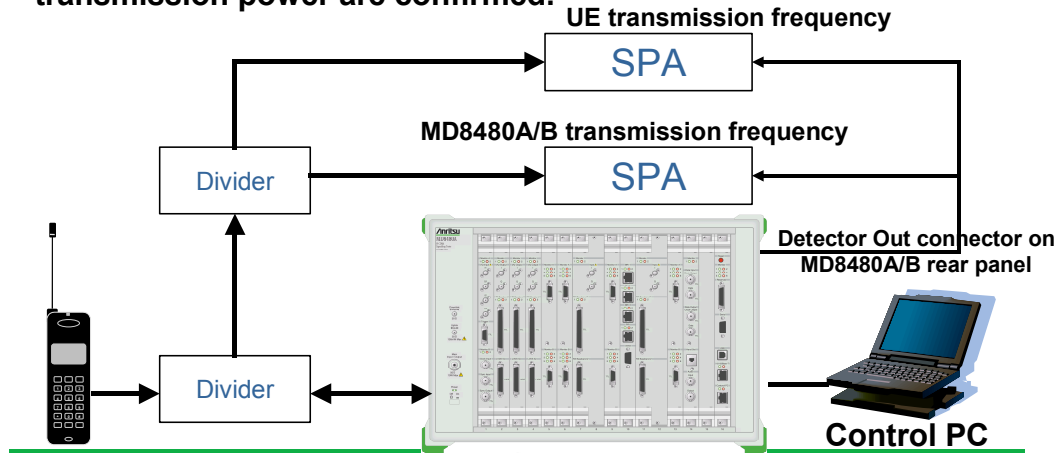
Discover What's Possible™
MD8480B-E-F-1

Slide 6

Anritsu

26th section

- With the setup below, the MD8480 DPCCH transmission power is reduced during communication. The SPA time domain measurements use the voltage reduction of the Detector Out connector when UE transmission stops as the SPA trigger. Then, the transition of both the UE transmission power and MD8480 transmission power are confirmed.



Discover What's Possible™
MD8480B-E-F-1

Slide 7

Control PC
Anritsu

Anritsu

Specifications are subject to change without notice.

ANRITSU CORPORATION

1800 Onna, Atsugi-shi, Kanagawa, 243-8555 Japan
Phone: +81-46-223-1111
Fax: +81-46-296-1264

● U.S.A.

ANRITSU COMPANY

TX OFFICE SALES AND SERVICE

1155 East Collins Blvd., Richardson, TX 75081, U.S.A.
Toll Free: 1-800-ANRITSU (267-4878)
Phone: +1-972-644-1777
Fax: +1-972-644-3416

● Canada

ANRITSU ELECTRONICS LTD.

700 Silver Seven Road, Suite 120, Kanata,
ON K2V 1C3, Canada
Phone: +1-613-591-2003
Fax: +1-613-591-1006

● Brasil

ANRITSU ELETRÔNICA LTDA.

Praca Amadeu Amaral, 27 - 1 andar
01327-010 - Paraiso, Sao Paulo, Brazil
Phone: +55-11-3283-2511
Fax: +55-11-3886940

● U.K.

ANRITSU LTD.

200 Capability Green, Luton, Bedfordshire LU1 3LU, U.K.
Phone: +44-1582-433280
Fax: +44-1582-731303

● Germany

ANRITSU GmbH

Nemetschek Haus Konrad-Zuse-Platz 1 81829
München, Germany
Phone: +49 (0) 89 442308-0
Fax: +49 (0) 89 442308-55

● France

ANRITSU S.A.

9, Avenue du Québec Z.A. de Courtabœuf 91951 Les
Ulis Cedex, France
Phone: +33-1-60-92-15-50
Fax: +33-1-64-46-10-65

● Italy

ANRITSU S.p.A.

Via Elio Vittorini, 129, 00144 Roma EUR, Italy
Phone: +39-06-509-9711
Fax: +39-06-502-2425

● Sweden

ANRITSU AB

Borgafjordsgatan 13 164 40 Kista, Sweden
Phone: +46-853470700
Fax: +46-853470730

● Finland

ANRITSU AB

Teknobulevardi 3-5, FI-01530 Vantaa, Finland
Phone: +358-9-4355-220
Fax: +358-9-4355-2250

● Denmark

Anritsu AB Danmark

Korskildelund 6 DK - 2670 Greve, Denmark
Phone: +45-36915035
Fax: +45-43909371

● Singapore

ANRITSU PTE LTD.

10, Hoe Chiang Road #07-01/02, Keppel Towers,
Singapore 089315
Phone: +65-6282-2400
Fax: +65-6282-2533

● Hong Kong

ANRITSU COMPANY LTD.

Suite 923, 9/F., Chinachem Golden Plaza, 77 Mody
Road, Tsimshatsui East, Kowloon, Hong Kong, China
Phone: +852-2301-4980
Fax: +852-2301-3545

● P. R. China

ANRITSU COMPANY LTD.

Beijing Representative Office

Room 1515, Beijing Fortune Building, No. 5 North
Road, the East 3rd Ring Road, Chao-Yang District
Beijing 100004, P.R. China
Phone: +86-10-6590-9230

● Korea

ANRITSU CORPORATION

8F Hyun Juk Bldg. 832-41, Yeoksam-dong,
Kangnam-ku, Seoul, 135-080, Korea
Phone: +82-2-553-6603
Fax: +82-2-553-6604

● Australia

ANRITSU PTY LTD.

Unit 3/170 Forster Road Mt. Waverley, Victoria, 3149,
Australia
Phone: +61-3-9558-8177
Fax: +61-3-9558-8255

● Taiwan

ANRITSU COMPANY INC.

7F, No. 316, Sec. 1, NeiHu Rd., Taipei, Taiwan
Phone: +886-2-8751-1816
Fax: +886-2-8751-1817

050912